

# Recombinant Protein A, His

Catalog #: 1001-01 Lot #: See label

**PrimeGene**<sup>™</sup>  
a biotechne brand

## Description

### Molecular Weight:

Approximately 34.7 kDa with 6×His-tag on C-terminus, a single non-glycosylated polypeptide chain containing 306 amino acids.

### Source:

*Escherichia coli*.

### Quantity:

10mg/100mg/1g

### Protein per Gram Powder:\*

See Label.

### Concentration for 1 unity OD at 280 nm:

4.652 mg/ml

## Specification

### Physical Appearance:

Sterile Filtered White lyophilized (freeze-dried) powder.

### Purity:

> 97 % by SDS-PAGE and HPLC analyses.

### Specificity:

The recombinant Protein A is a genetically engineered protein containing 5 IgG-binding regions of protein A. Cell wall binding region, cell membrane binding region and albumin binding region have been removed from the recombinant Protein A to ensure the maximum

specific IgG binding. The recombinant Protein A is ideal for purification of polyclonal or monoclonal IgG antibodies. Protein A binds to various human, mouse and rat IgG subclasses (e.g., human IgG1, IgG2, IgG4; mouse IgG2a, IgG2b, IgG3; rat IgG2c). It also binds to total IgG from rabbit, guinea pig, pig, dog and cat.

### Endotoxin Level:

Less than 0.1 EU/μg of Protein A, His as determined by LAL method.

### Formulation:

Lyophilized from additive free solution.

## Usage Guide

### Stability & Storage:

- Use a manual defrost freezer and avoid repeated freeze-thaw cycles.
- 12 months from date of receipt, -20 to -70 °C as supplied.
- 1 month, 2 to 8 °C under sterile conditions after reconstitution.
- 3 months, -20 to -70 °C under sterile conditions after reconstitution.

### Reconstitution:

Dissolve in distilled water or saline.

### Shipping:

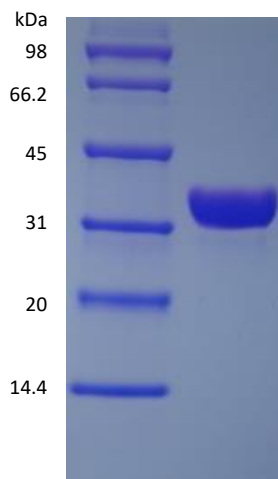
The product is shipped at ambient temperature. Upon receipt, store it immediately at -20 °C.

\*Masses of the protein and powder are not equal.

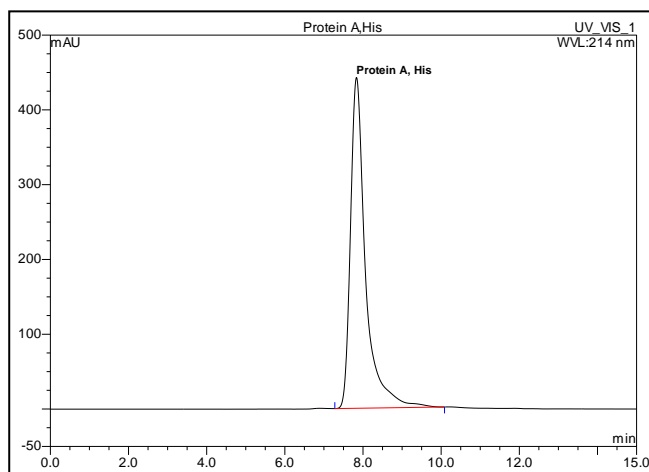
## Background

Protein A is a cell wall component produced by several strains of *Staphylococcus aureus* that consists of a single polypeptide chain and contains little or no carbohydrate. Recombinant Protein A is produced in *E.Coli* and functions essentially the same as native Protein A. It consists of 5 IgG-binding domains E-D-A-B-C aligned in series.

## SDS-PAGE



## SEC-HPLC



Rev. 09/19/2023 V.3

Manufactured By Shanghai PrimeGene Bio-Tech Co., Ltd.

**FOR RESEARCH USE ONLY. NOT FOR HUMAN USE.**